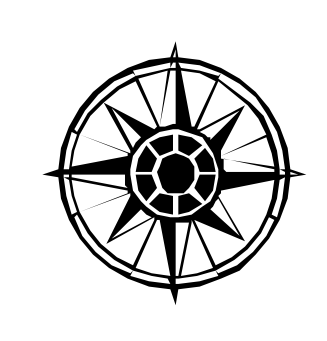
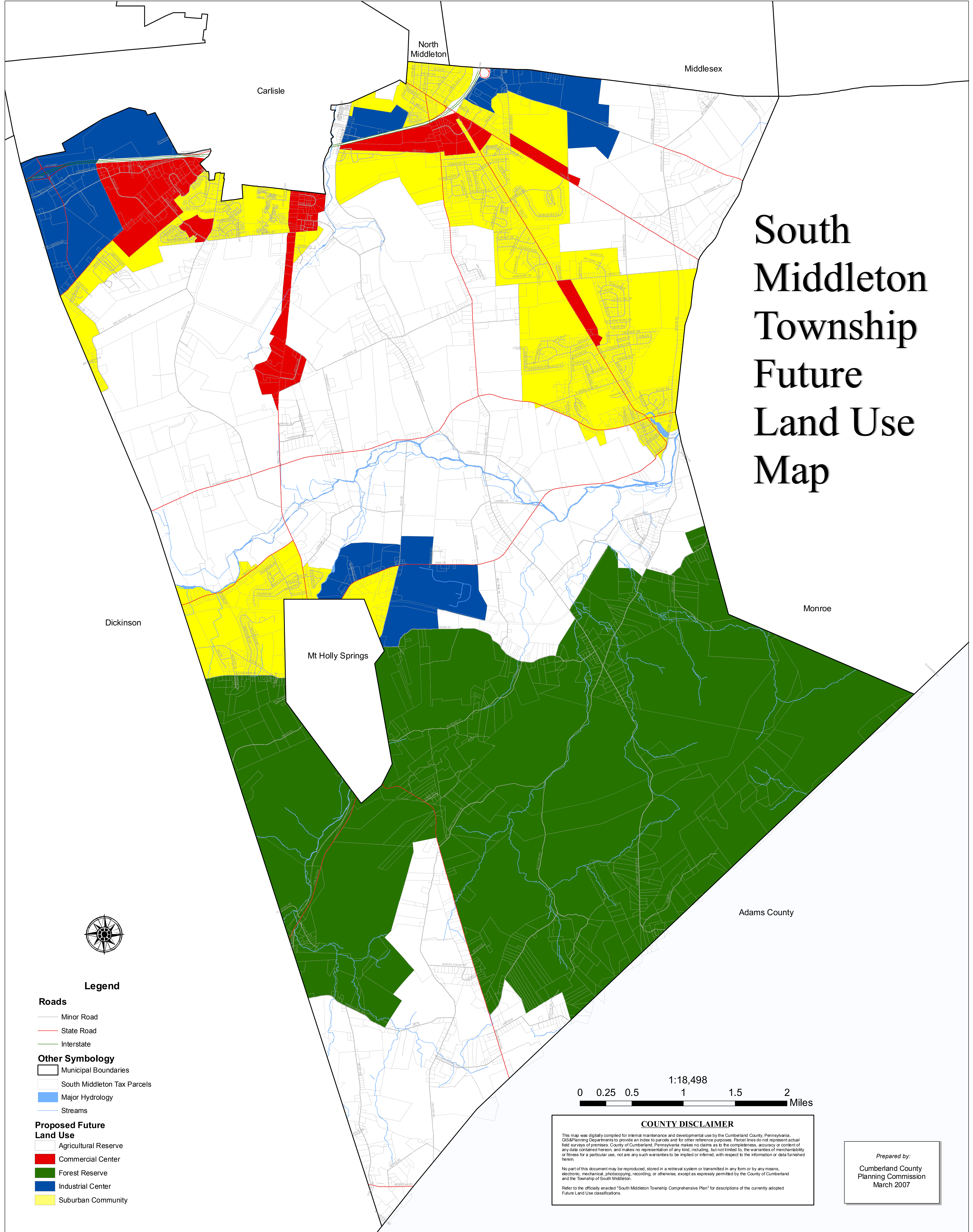
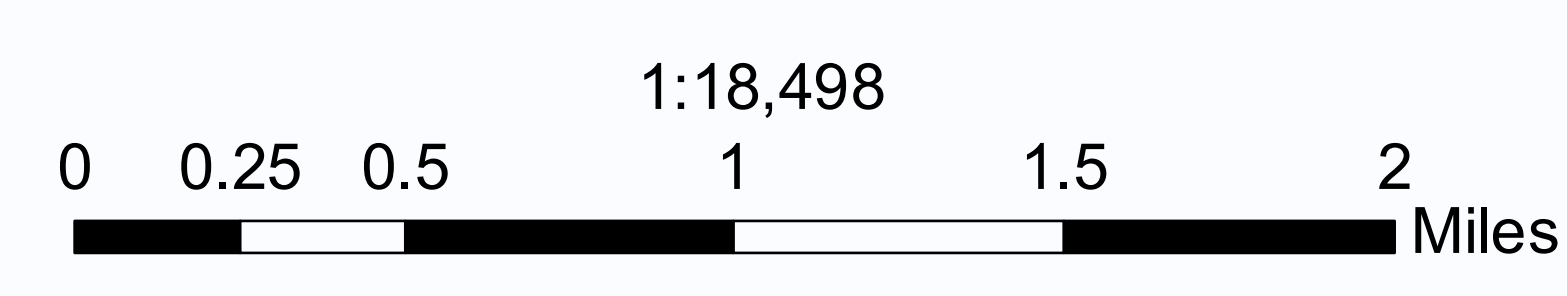


South Middleton Township Future Land Use Map



Legend

- Roads**
- Minor Road
 - State Road
 - Interstate
- Other Symbology**
- ▭ Municipal Boundaries
 - ▭ South Middleton Tax Parcels
 - ▭ Major Hydrology
 - ▭ Streams
- Proposed Future Land Use**
- ▭ Agricultural Reserve
 - ▭ Commercial Center
 - ▭ Forest Reserve
 - ▭ Industrial Center
 - ▭ Suburban Community



COUNTY DISCLAIMER

This map was digitally compiled for internal maintenance and developmental use by the Cumberland County, Pennsylvania, GIS/Planning Departments to provide an index to parcels and for other reference purposes. Parcel lines do not represent actual field surveys of premises. Cumberland County, Pennsylvania makes no claim as to the completeness, accuracy or content of any data contained hereon, and makes no representation of any kind, including, but not limited to, the warranties of merchantability or fitness for a particular use, nor are any such warranties to be implied or inferred, with respect to the information or data furnished herein.

No part of this document may be reproduced, stored in a retrieval system or transmitted in any form or by any means, electronic, mechanical, photocopying, recording, or otherwise, except as expressly permitted by the County of Cumberland and the Township of South Middleton.

Refer to the officially enacted "South Middleton Township Comprehensive Plan" for descriptions of the currently adopted Future Land Use classifications.

Prepared by:
Cumberland County
Planning Commission
March 2007